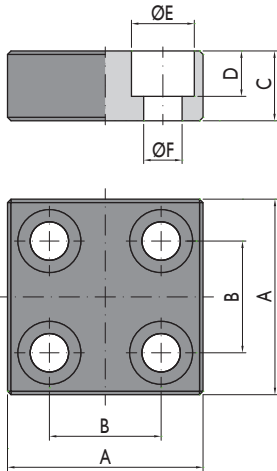
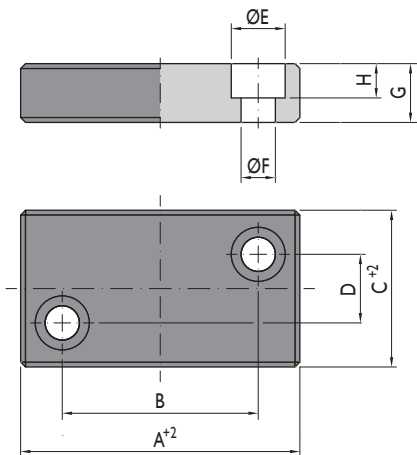


## Support plates

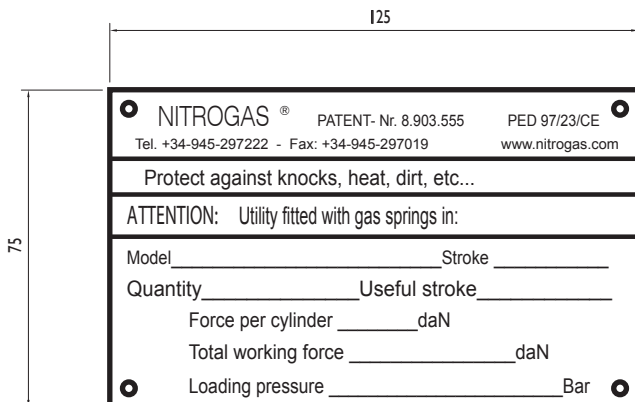


	A mm	B mm	C mm	D mm	E mm	F mm
SPC-150	40	21	15	10	15	9
SPC-250	40	21	15	10	15	9
SPC-500	40	21	15	10	15	9
SPC-750	56	32	20	13	18	11
SPC-1500	56	32	20	13	18	11
SPC-3000	90	67	20	13	18	11
SPC-5000	90	67	20	13	18	11
SPC-7500	140	110	20	13	18	11
SPC-10000	140	110	20	13	18	11



	A mm	B mm	C mm	D mm	E mm	F mm	G mm	H mm
SPV-150	50	32	25	8	11	7	12	7
SPV-250	50	32	25	8	11	7	12	7
SPV-500	55	40	30	14	11	7	12	7
SPV-750	70	48	35	14	15	9	15	9
SPV-1500	75	56	50	30	15	9	15	9
SPV-3000	85	66	60	40	15	9	15	9
SPV-5000	100	72	80	56	18	11	20	11
SPV-7500	110	85	100	75	18	11	20	11
SPV-10000	130	100	110	80	18	11	20	11

## Identification plates



NITROGAS recommends identifying tools containing high pressure nitrogen gas springs to ensure the proper handling of the gas springs.

Reference	Language
PI-119-1	Spanish
PI-119-2	English
PI-119-3	German
PI-119-4	French