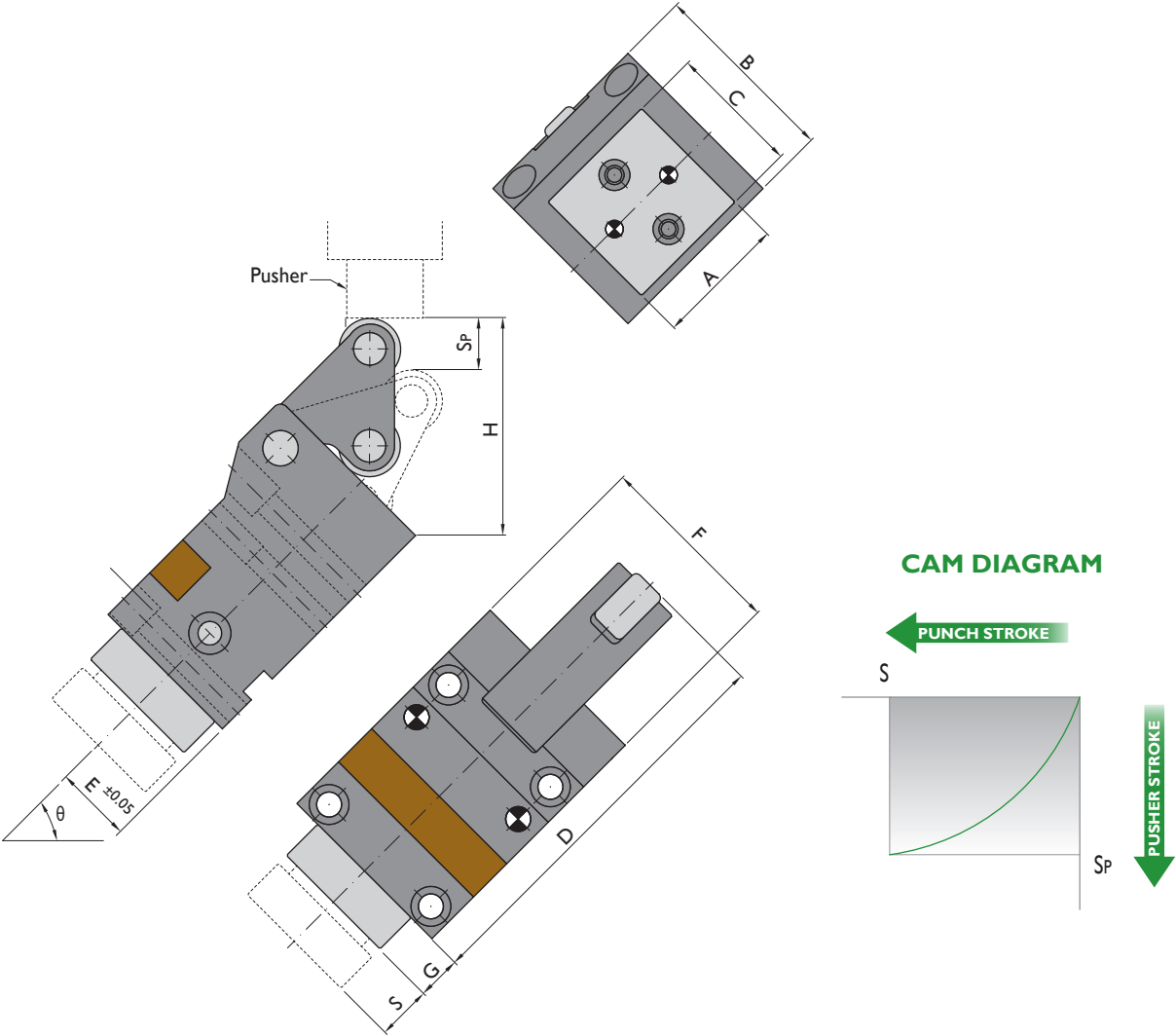


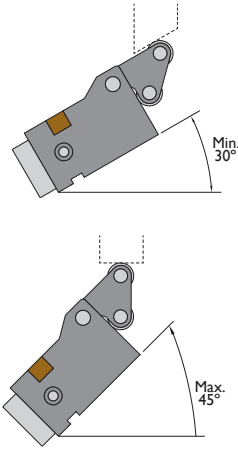


## Structure for inclined Punching Units



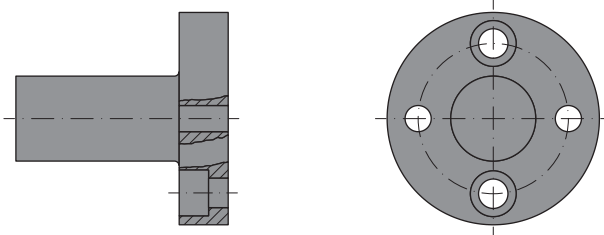
Ordering example: 4 x CPUS-Working Force-Stroke- $\theta$   
4 x CPUS-05000-30-45

### Maximum inclination angle



### Optional accessories

#### PUSHER\*



\* Only for 45° degrees mounting. For any other installation angle contact with NITROGAS engineering.

See dimensions on page 18.

Ordering example: SE-2

Model	Order No.			Weight kg	Spring Force daN	General Dimensions										Accessories <sup>(1)</sup>
	Working Force daN	S mm	$\theta$ °			A mm	B mm	C mm	D mm	E mm	F mm	G mm	H mm	Sp mm	Pusher	
CPUS	01500	15	45	2.8	280	45	65	45	137.5	26	65	15	74	18.5	SE-1	
CPUS	03000	20	45	4.9	270	45	75	45	190	28.5	75	15	97	30.9	SE-2	
CPUS	05000	30	45	8.3	550	45	90	45	227	35	90	15	116	44.1	SE-2	
CPUS	07000	40	45	13.4	540	56	105	56	265	42	105	18	134.5	60.4	SE-3	
CPUS	10000	50	45	21.7	540	63	120	63	304	48	120	20	150	71.2	SE-3	

<sup>(1)</sup> For more information about accessories contact with NITROGAS engineering at [engineering@nitrogas.com](mailto:engineering@nitrogas.com)



More details about Punching Units and spare parts on our website:

<http://www.nitrogas.com/es/CPUS.aspx>