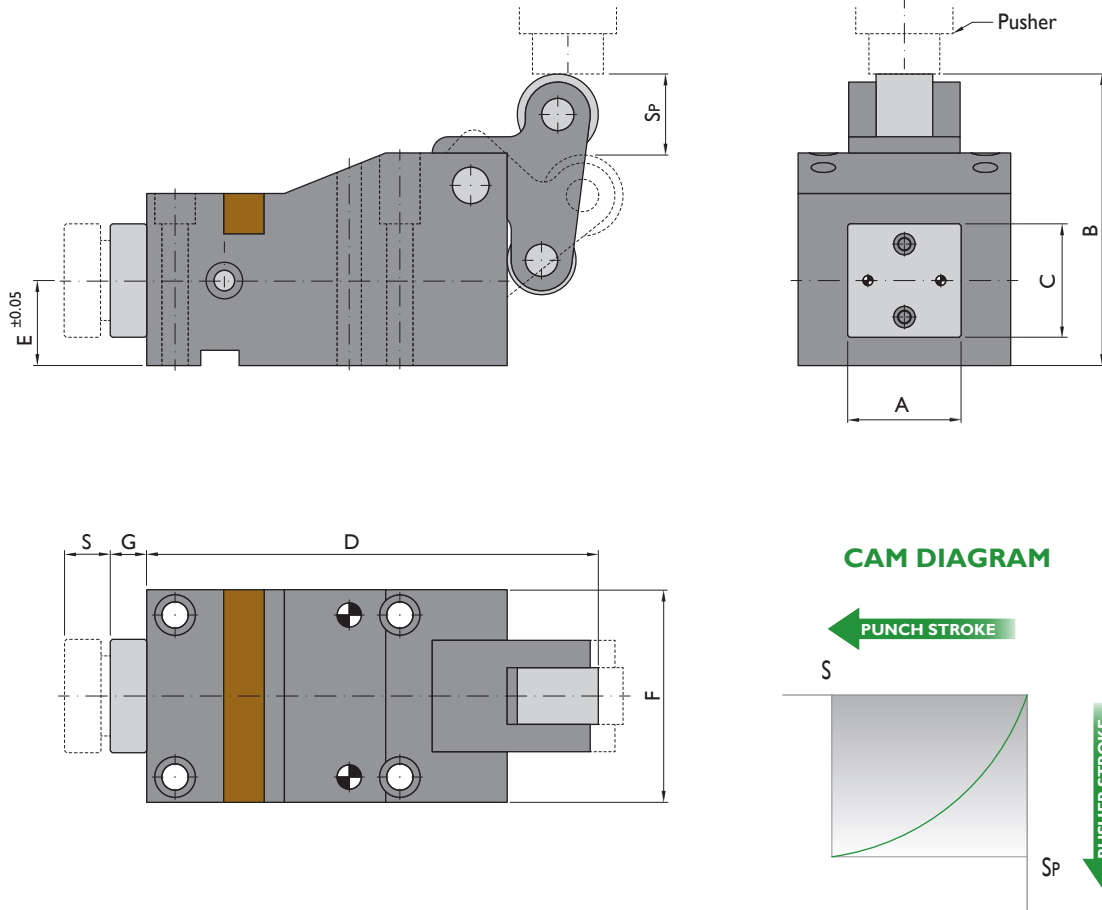


WEB



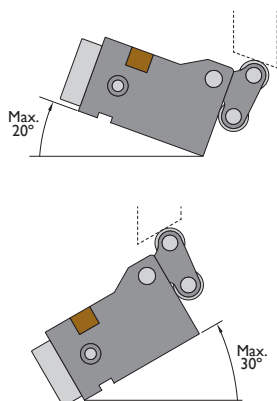
CAD

Structure for horizontal Punching Units



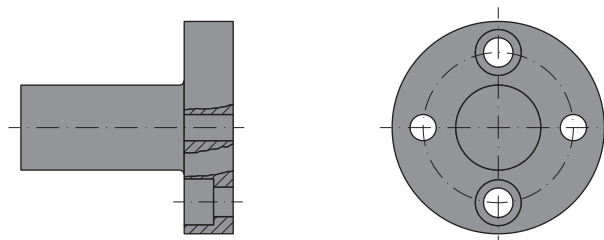
Ordering example: 4 x CPUS-Working Force-Stroke
4 x CPUS-05000-30

Maximum inclination angle



Optional accessories

PUSHER*



* Only for horizontal mounting. For any other installation angle contact with NITROGAS engineering.

See dimensions on page 18.

Ordering example: SE-2

Order No.		General Dimensions											Accessories ⁽¹⁾
Model	Working Force daN	S mm	Weight kg	Spring Force daN	A mm	B mm	C mm	D mm	E mm	F mm	G mm	Sp mm	Pusher
CPUS	01500	15	2.8	280	45	76	45	117.5	26	65	15	13.8	SE-1
CPUS	03000	20	4.7	270	45	98	45	155	28.5	75	15	20.2	SE-1
CPUS	05000	30	7.9	550	45	121	45	186	35	90	15	27	SE-2
CPUS	07000	40	12.9	540	56	144	56	223	42	105	18	41.3	SE-3
CPUS	10000	50	21.2	540	63	167	63	262	48	120	20	51.2	SE-3

⁽¹⁾ For more information about accessories contact with NITROGAS engineering at engineering@nitrogas.com



More details about Punching Units and spare parts on our website:

<http://www.nitrogas.com/es/CPUS.aspx>