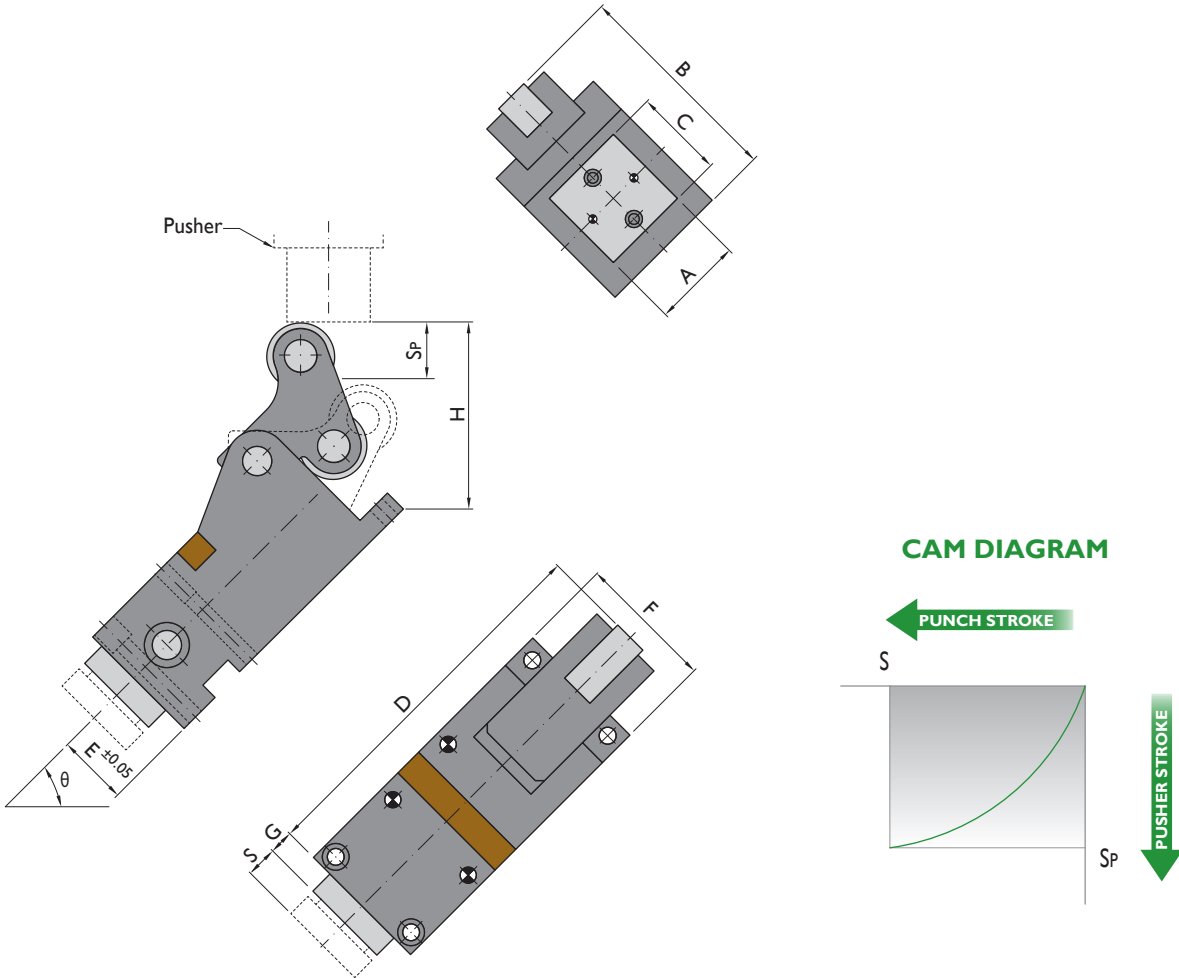


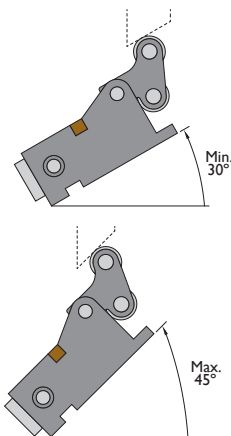
WEB  
↓  
CAD

## Structure for inclined Punching Units



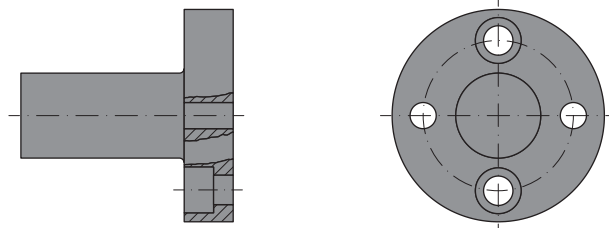
Ordering example: 4 x CPUN-Working Force-Stroke- $\theta$   
4 x CPUN-05000-25-45

### Maximum inclination angle



### Optional accessories

#### PUSHER\*



\* Only for 45° degrees mounting. For any other installation angle contact with NITROGAS engineering.

See dimensions on page 18.

Ordering example: SE-2

| Order No. |                   |      |            | General Dimensions |                  |      |      |      |       |      |      |      |       |       |        | Accessories <sup>(1)</sup> |
|-----------|-------------------|------|------------|--------------------|------------------|------|------|------|-------|------|------|------|-------|-------|--------|----------------------------|
| Model     | Working Force daN | S mm | $\theta$ ° | Weight kg          | Spring Force daN | A mm | B mm | C mm | D mm  | E mm | F mm | G mm | H mm  | Sp mm | Pusher |                            |
| CPUN      | 05000             | 25   | 45         | 6.3                | 270              | 45   | 98   | 45   | 198.5 | 37   | 80   | 15   | 97    | 37.5  | SE-2   |                            |
| CPUN      | 07000             | 38   | 45         | 9.4                | 550              | 56   | 122  | 56   | 255.5 | 44   | 85   | 15   | 122.6 | 58.3  | SE-3   |                            |
| CPUN      | 10000             | 50   | 45         | 14                 | 550              | 63   | 131  | 63   | 283.5 | 50   | 96   | 15   | 125.7 | 64.6  | SE-4   |                            |

<sup>(1)</sup> For more information about accessories contact with NITROGAS engineering at [engineering@nitrogas.com](mailto:engineering@nitrogas.com)



More details about Punching Units and spare parts on our website:

<http://www.nitrogas.com/es/CPUN.aspx>