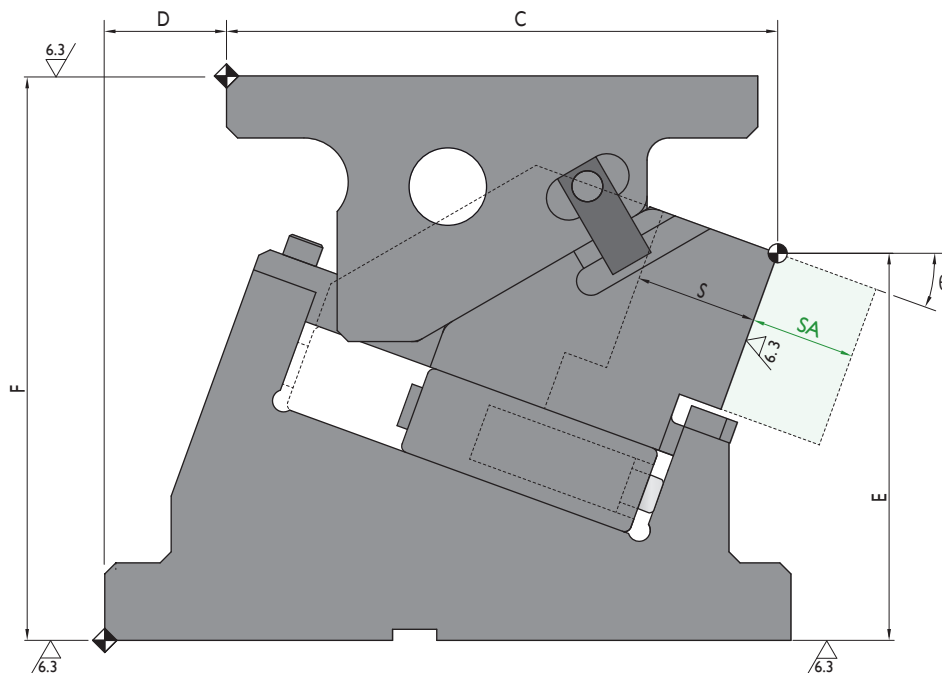
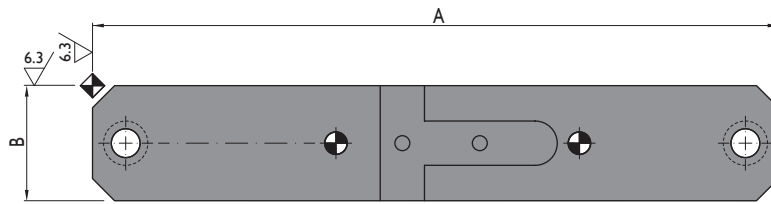
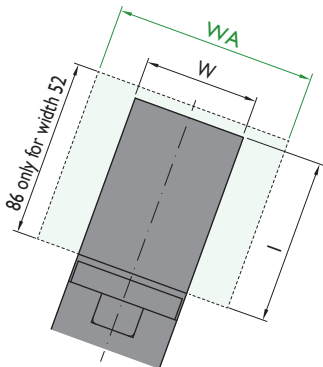
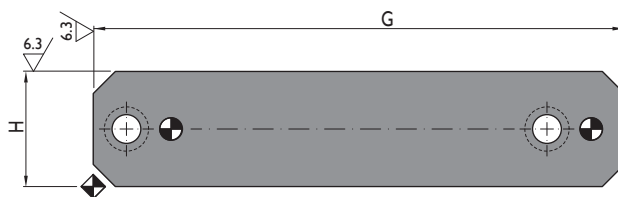
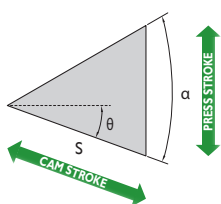


WEB

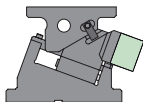
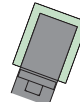
 CAD



CAM DIAGRAM



Available Options

		SA	WA
		 <p>Additional slider length available 5 - 65 mm (5 mm steps)</p>	 <p>Additional mounting width available</p>
CDCB	52	SA5 - SA10 - ... - SA65	WA100
CDCB	90	-	WA120 / WA150

Ordering example: CDCB-W-θ-S-SA-WA
 CDCB-52-20-55 (Standard dimensions)
 CDCB-52-20-55-SA55-WA100 (Additional slider length (55 mm) and additional mounting width (100 mm))

Order No.				Main Features				General Dimensions									
Model	W mm	θ °	S mm	Working Force tnf		Weight kg	Spring Force kgf	A mm	B mm	C mm	D mm	E mm	F mm	G mm	H mm	I mm	α °
				1.000.000 strokes	300.000 strokes												
CDCB	52	00	55	2	4	14.2	280	235	52	220	0	170	215	210	52	75	50
CDCB	52	05	55	2	4	18.5	280	310	52	234.87	35	195.66	255	225	52	75	50
CDCB	52	10	55	2	4	19.4	280	310	52	244.75	35	195.02	255	235	52	75	50
CDCB	52	15	55	2	4	20	280	310	52	249.51	40	193.09	255	240	52	75	50
CDCB	52	20	55	2	4	19.5	280	310	52	249.05	55	174.88	255	240	52	75	50
CDCB	90	00	55	4	8	24.9	560	233	90	236	0	182	220	210	90	82	50
CDCB	90	05	55	4	8	25.9	560	240	90	251.42	0	166.24	220	225	90	82	50
CDCB	90	10	55	4	8	27.3	560	243	90	261.72	0	164.14	220	235	90	82	50
CDCB	90	15	55	4	8	29.3	560	248	90	260.82	15	160.97	225	235	90	82	50