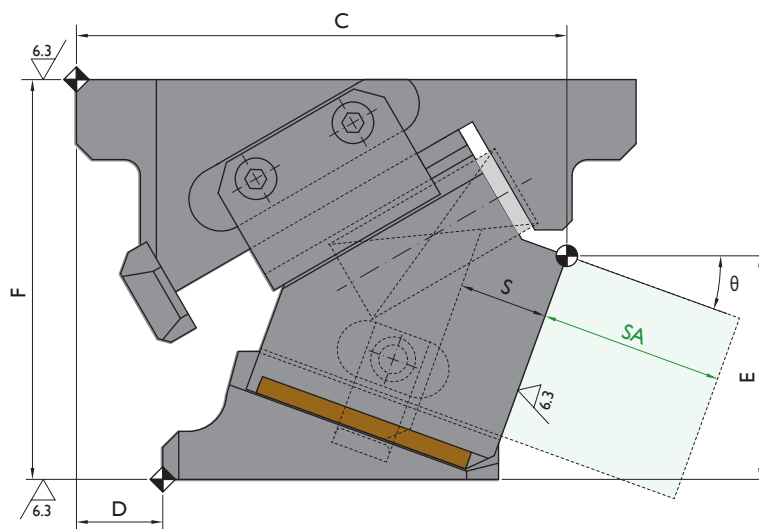
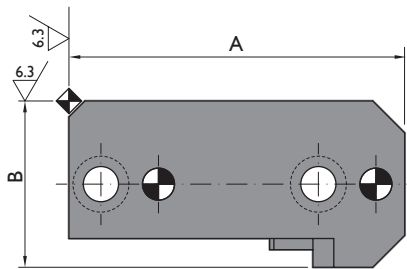
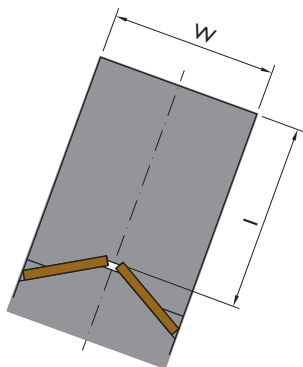
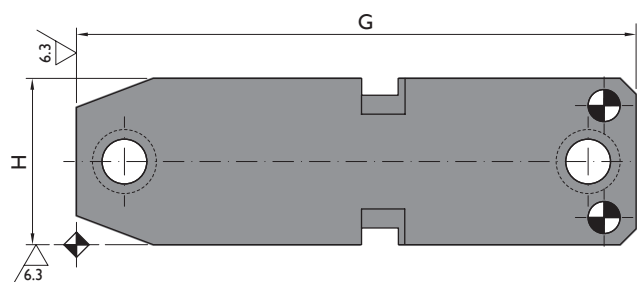
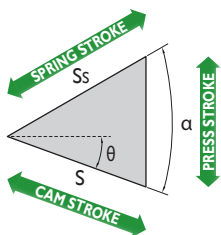


WEB
↓
CAD

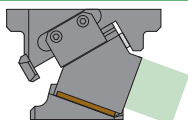


CAM DIAGRAM



Available Options

SA



Additional slider length available
l - 60 mm
(1 mm steps)

CACS 52

SA1 - SA2 - ... - SA60

Ordering example: CACS-W-θ-SA
CACS-52-20
CACS-52-20-SA45

(Standard dimensions)
(Additional slider length (45 mm))

Order No.			Main Features					General Dimensions										
Model	W mm	θ °	S mm	Working Force tnf		Weight kg	Spring Force kgf	A mm	B mm	C mm	D mm	E mm	F mm	G mm	H mm	I mm	Ss mm	α °
				1,000,000 strokes	300,000 strokes													
CACS 52 00	52	00	19.3	1	3	5.3	100	105	52	150	45	82	125	175	52	60	30	50
CACS 52 05	52	05	21.3	1	3	5.2	100	105	52	153.1	42	79.79	125	175	52	60	30	50
CACS 52 10	52	10	23.3	1	3	5.1	100	105	52	153.55	37	77.17	125	175	52	60	30	50
CACS 52 15	52	15	25.4	1	3	5	100	105	52	153.32	32	74.18	125	175	52	60	30	50
CACS 52 20	52	20	27.6	1	3	5	100	105	52	153.38	27	69.9	125	175	52	60	30	50
CACS 52 25	52	25	30	1	3	5	100	105	52	154.71	20	66.38	125	175	52	60	30	50
CACS 52 30	52	30	32.6	1	3	5	100	105	52	153.28	17	61.69	125	175	52	60	30	50
CACS 52 35	52	35	35.4	1	3	4.9	100	105	52	152.09	10	57.9	125	175	52	60	30	50
CACS 52 40	52	40	38.6	1	3	5	100	105	52	149.14	4	53.07	125	175	52	60	30	50
CACS 52 45	52	45	42.3	1	3	5	100	105	52	145.41	-4	49.27	125	175	52	60	30	50
CACS 52 50	52	50	46.7	1	3	5	100	105	52	143.92	-9	45.57	125	175	52	60	30	50
CACS 52 55	52	55	52.3	1	3	5	100	105	52	144.67	-10	42.03	125	175	52	60	30	55
CACS 52 60	52	60	60	1	3	5.2	100	105	52	150.69	-9	34.72	125	175	52	60	30	60
CACS 52 65	52	65	47.3	1	3	5.9	100	105	52	130.16	-45	25.46	125	175	52	60	20	65
CACS 52 70	52	70	58.5	1	3	5.9	100	105	52	133.62	-40	18.03	125	175	52	60	20	70
CACS 52 75	52	75	46.3	1	3	7.8	100	111	52	148.74	-30	25.41	150	175	52	70	12	75
CACS 52 80	52	80	57.5	1	3	7.7	100	110	52	148.74	-30	25.41	150	175	52	70	10	80