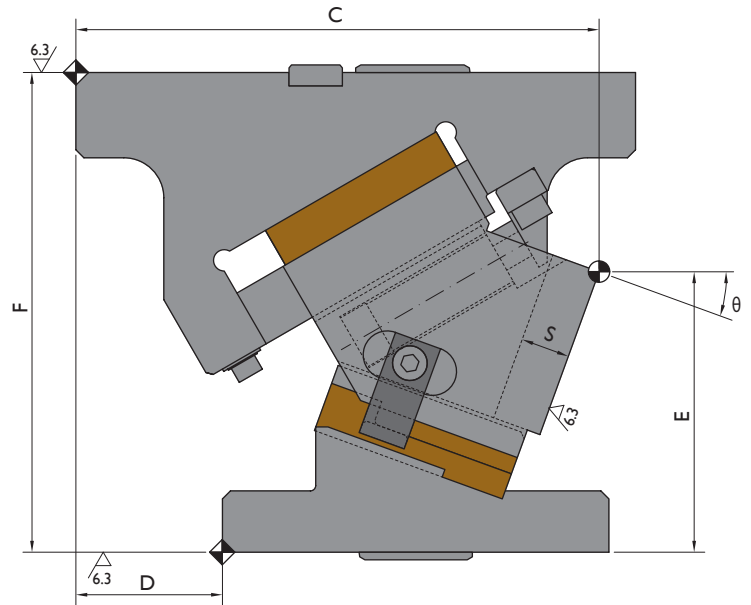
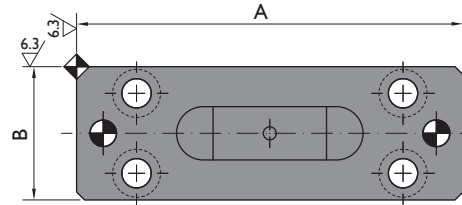
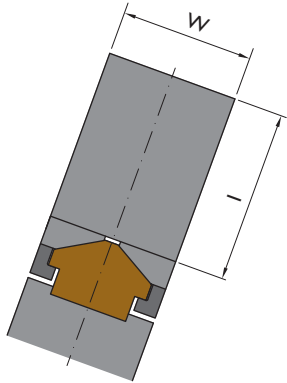
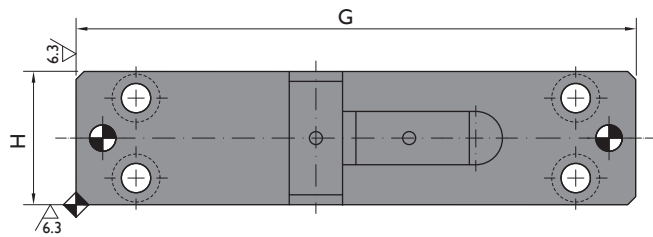
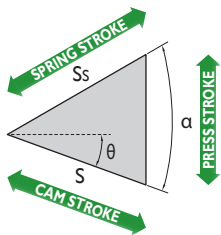




## Structure for cams width 50 - 80 mm



### CAM DIAGRAM



### Available Options

P

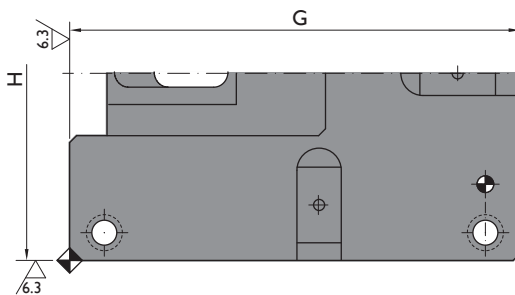
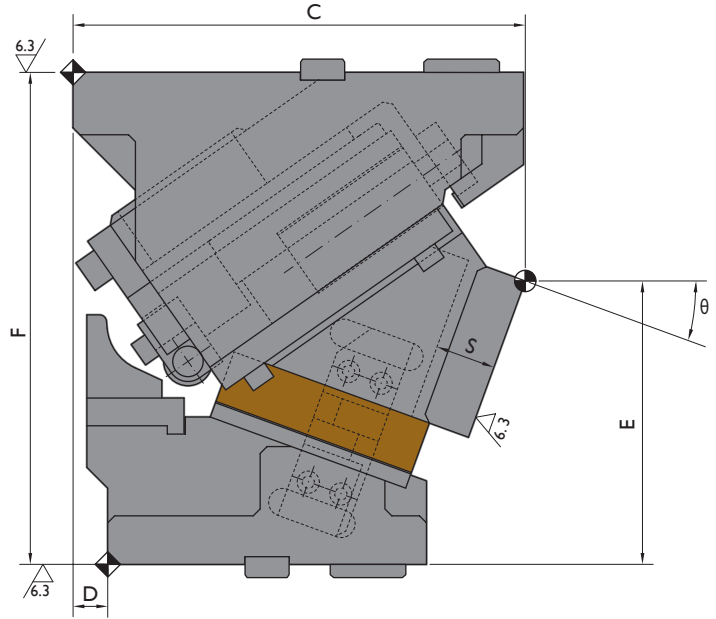
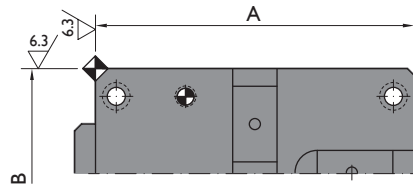
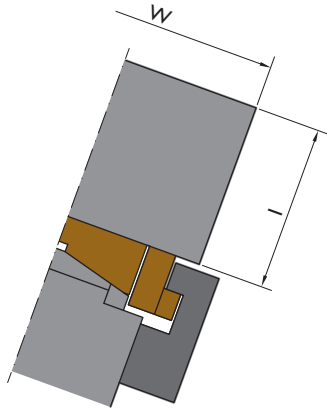
Pin holes diameters available

		Standards	Options
CACG	50	Ø10 H7	P13 (Ø13 H7)
CACG	65	Ø10 H7	-
CACG	80	Ø13 H7	P12 (Ø12 H7)

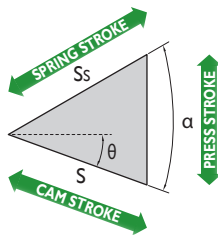
Ordering example: CACG-W-θ-P  
 CACG-50- 20 (Standard dimensions)  
 CACG-50-20-P13 (Ø13 H7 holes)

WEB  
  
 CAD

## Structure for cams width 150 - 300 mm



### CAM DIAGRAM



### Available Options

P



Pin holes diameters available

		Standards	Options
CACG	150	Ø12 H7	P13 (Ø13 H7)
CACG	200	Ø12 H7	P13 (Ø13 H7)
CACG	300	Ø16 H7	-

Ordering example: CACG-W-θ-P  
 CACG-200- 20  
 CACG-200-20-P13

(Standard dimensions)  
 (Ø13 H7 holes)

Order No.			Main Features					General Dimensions										
Model	W mm	$\theta$ °	S mm	Working Force tnf		Weight kg	Spring Force kgf	A mm	B mm	C mm	D mm	E mm	F mm	G mm	H mm	I mm	Ss mm	$\alpha$ °
				1,000,000 strokes	300,000 strokes													
CACG 50 00	50	00	15	3	6	10.6	280	145	50	195	80	112.5	180	210	50	65	23.3	50
CACG 50 05	50	05	15.6	3	6	10.3	280	145	50	198.04	75	111.71	180	210	50	65	22	50
CACG 50 10	50	10	15.6	3	6	9.9	280	145	50	195.99	65	110.23	180	210	50	65	20	50
CACG 50 15	50	15	17	3	6	9.7	280	145	50	198.77	65	108.05	180	210	50	65	20	50
CACG 50 20	50	20	18.4	3	6	9.4	280	145	50	196.34	55	105.21	180	210	50	65	20	50
CACG 50 25	50	25	18	3	6	9.4	280	145	50	191.62	41	99.72	180	210	50	65	18	50
CACG 50 30	50	30	17.4	3	6	9.2	280	145	50	190.58	40	94.61	180	210	50	65	16	50
CACG 50 35	50	35	18.9	3	6	9.2	280	145	50	187.15	25	89.9	180	210	50	65	16	50
CACG 50 40	50	40	20.6	3	6	9.1	280	145	50	183.29	22.5	84.65	180	210	50	55	16	50
CACG 50 45	50	45	22.5	3	6	9.1	280	145	50	179.94	10	81.87	180	210	50	55	16	50
CACG 50 50	50	50	23.3	3	6	9	280	145	50	174.07	5	80.63	180	210	50	55	15	50
CACG 50 55	50	55	26.1	3	6	9.5	280	145	50	168.64	-15	68.96	180	210	50	55	15	50
CACG 50 60	50	60	31.5	3	6	9.7	280	145	50	162.61	-25	61.92	180	210	50	55	16	50
CACG 50 65	50	65	36.6	3	6	10	280	145	50	155.95	-35	54.56	180	210	50	55	16	50
CACG 65 00	65	00	15	3	6	10.7	280	120	65	170	70	115	175	170	65	56	23.3	50
CACG 65 05	65	05	15.6	3	6	10.4	280	120	65	170.36	65	107.78	175	170	65	56	22	50
CACG 65 10	65	10	15.6	3	6	10.2	280	120	65	175.07	62.5	105.12	175	170	65	56	20	50
CACG 65 15	65	15	17	3	6	9.9	280	120	65	174.09	55	102.08	175	170	65	56	20	50
CACG 65 20	65	20	18.4	3	6	9.9	280	120	65	172.4	45	98.72	175	170	65	56	20	50
CACG 65 30	65	30	19.5	3	6	9.6	280	120	65	171.78	35	91.29	175	170	65	56	18	50
CACG 65 40	65	40	23.1	3	6	9.5	280	120	65	163.07	20	83.37	175	170	65	56	18	50
CACG 65 50	65	50	24.9	3	6	9.9	280	120	65	156.22	5	70.5	175	170	65	56	16	50
CACG 65 60	65	60	32	3	6	11.1	280	120	65	146.29	-15	58.22	175	170	65	56	16	60
CACG 80 00	80	00	30.2	5	10	34	540	170	80	277	135	160	270	270	80	90	47	50
CACG 80 05	80	05	30.5	5	10	32	540	170	80	278.32	125	154.33	270	270	80	90	43	50
CACG 80 10	80	10	31.1	5	10	32	540	170	80	274.54	110	152.68	270	270	80	90	40	50
CACG 80 15	80	15	33.9	5	10	32	540	170	80	277.58	105	150.05	270	270	80	90	40	50
CACG 80 20	80	20	32.3	5	10	32	530	170	80	273.34	95	146.48	270	270	80	90	35	50
CACG 80 25	80	25	35	5	10	30	530	170	80	268.75	80	141.97	270	270	80	90	35	50
CACG 80 30	80	30	34.7	5	10	30	530	170	80	261.73	65	136.58	270	270	80	90	32	50
CACG 80 35	80	35	37.7	5	10	30	530	170	80	258.2	55	130.34	270	270	80	90	32	50
CACG 80 40	80	40	39.9	5	10	29	530	170	80	245.09	35	123.3	270	270	80	90	31	50
CACG 80 45	80	45	43.7	5	10	29	530	170	80	245.34	30	115.51	270	270	80	90	31	50
CACG 80 50	80	50	46.7	5	10	30	530	170	80	225.87	5	107.03	270	270	80	90	30	50
CACG 80 55	80	55	53.8	5	10	30	530	170	80	229.64	0	97.93	270	270	80	90	31	50
CACG 80 60	80	60	61.1	5	10	31	530	170	80	208.58	-20	88.27	270	270	80	90	31	50
CACG 80 65	80	65	70.9	5	10	32	530	170	80	203.67	-30	78.13	270	270	80	90	31	50

Order No.			Main Features					General Dimensions										
Model	W mm	$\theta$ °	S mm	Working Force 1,000,000 strokes	trf 300,000 strokes	Weight kg	Spring Force kgf	A mm	B mm	C mm	D mm	E mm	F mm	G mm	H mm	I mm	Ss mm	$\alpha$ °
CACG 150 00	150	00	28.6	15	30	117.6	1100	230	150	325	80	225	355	325	240	120	50	55
CACG 150 05	150	05	32.2	15	30	114	1100	230	150	319.7	60	221.74	355	325	240	120	50	55
CACG 150 10	150	10	35.9	15	30	113.4	1100	230	150	319.06	45	217.21	355	325	240	120	50	55
CACG 150 15	150	15	39.6	15	30	111.9	1100	230	150	322.98	35	211.44	355	325	240	120	50	55
CACG 150 20	150	20	43.5	15	30	111.3	1100	230	150	326.33	25	204.49	355	325	240	120	50	55
CACG 150 25	150	25	47.7	15	30	111.2	1100	230	150	329.03	15	196.39	355	325	240	120	50	55
CACG 150 30	150	30	52.3	15	30	110.2	1100	230	150	325.98	0	187.22	355	325	240	120	50	55
CACG 150 35	150	35	57.3	15	30	113.1	1100	230	150	322.08	-15	162.05	355	325	240	120	50	55
CACG 150 40	150	40	63	15	30	114.7	1100	230	150	312.26	-35	150.94	355	325	240	120	50	55
CACG 150 45	150	45	69.6	15	30	115.8	1100	230	150	306.42	-50	138.99	355	325	240	120	50	55
CACG 150 50	150	50	77.4	15	30	117.5	1100	230	150	294.51	-70	126.29	355	325	240	120	50	55
CACG 150 55	150	55	87.1	15	30	117.5	1100	230	150	281.46	-90	112.93	355	325	240	120	50	55
CACG 150 60	150	60	99.6	15	30	122	1100	230	150	272.22	-105	99.02	355	325	240	120	50	55
CACG 150 65	150	65	116.5	15	30	126	1100	230	150	261.75	-120	84.66	355	325	240	120	50	55
CACG 200 00	200	00	28.6	15	30	129.7	1400	230	150	325	80	225	355	325	270	120	50	55
CACG 200 05	200	05	32.2	15	30	126.6	1400	230	150	319.7	60	221.74	355	325	270	120	50	55
CACG 200 10	200	10	35.9	15	30	124.8	1400	230	150	319.06	45	217.21	355	325	270	120	50	55
CACG 200 15	200	15	39.6	15	30	127.4	1400	230	150	322.98	35	211.44	355	325	270	120	50	55
CACG 200 20	200	20	43.5	15	30	123.2	1400	230	150	326.33	25	204.49	355	325	270	120	50	55
CACG 200 25	200	25	47.7	15	30	123	1400	230	150	329.03	15	196.39	355	325	270	120	50	55
CACG 200 30	200	30	52.3	15	30	121.7	1400	230	150	325.98	0	187.22	355	325	270	120	50	55
CACG 200 35	200	35	57.3	15	30	125.3	1400	230	150	322.08	-15	162.05	355	325	270	120	50	55
CACG 200 40	200	40	63	15	30	126.8	1400	230	150	312.26	-35	150.94	355	325	270	120	50	55
CACG 200 45	200	45	69.6	15	30	127.9	1400	230	150	306.42	-50	138.99	355	325	270	120	50	55
CACG 200 50	200	50	77.4	15	30	129.8	1400	230	150	294.51	-70	126.29	355	325	270	120	50	55
CACG 200 55	200	55	87.1	15	30	132.6	1400	230	150	281.46	-90	112.93	355	325	270	120	50	55
CACG 200 60	200	60	99.6	15	30	135.1	1400	230	150	272.22	-105	99.02	355	325	270	120	50	55
CACG 200 65	200	65	116.5	15	30	138.9	1400	230	150	261.75	-120	84.66	355	325	270	120	50	55
CACG 300 00	300	00	28.6	30	60	184.5	2800	230	250	325	80	265	355	325	340	160	50	55
CACG 300 05	300	05	32.2	30	60	181	2800	230	250	323.19	60	261.59	355	325	340	160	50	55
CACG 300 10	300	10	35.9	30	60	178.7	2800	230	250	326.01	45	256.6	355	325	340	160	50	55
CACG 300 15	300	15	39.6	30	60	177.3	2800	230	250	333.33	35	250.08	355	325	340	160	50	55
CACG 300 20	300	20	43.5	30	60	176	2800	230	250	340.02	25	242.07	355	325	340	160	50	55
CACG 300 25	300	25	47.7	30	60	174.9	2800	230	250	345.94	15	232.65	355	325	340	160	50	55
CACG 300 30	300	30	52.3	30	60	173.8	2800	230	250	345.98	0	221.87	355	325	340	160	50	55
CACG 300 35	300	35	57.3	30	60	178.7	2800	230	250	345.03	-15	194.81	355	325	340	160	50	55
CACG 300 40	300	40	63	30	60	181.6	2800	230	250	337.97	-35	181.59	355	325	340	160	50	55
CACG 300 45	300	45	69.6	30	60	184.5	2800	230	250	334.71	-50	167.28	355	325	340	160	50	55
CACG 300 50	300	50	77.4	30	60	188.1	2800	230	250	325.15	-70	152	355	325	340	160	50	55
CACG 300 55	300	55	87.1	30	60	193.4	2800	230	250	314.23	-90	135.88	355	325	340	160	50	55
CACG 300 60	300	60	99.6	30	60	197.6	2800	230	250	306.87	-105	119.02	355	325	340	160	50	55
CACG 300 65	300	65	116.5	30	60	202.9	2800	230	250	298	-120	101.56	355	325	340	160	50	55