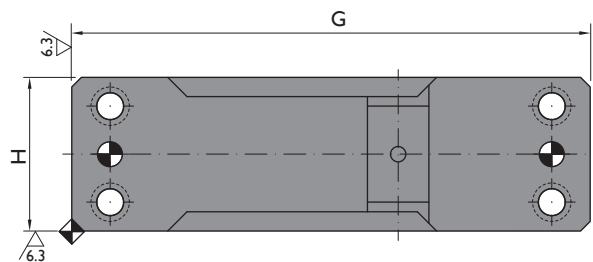
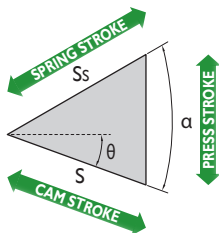
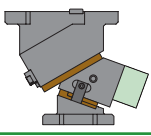

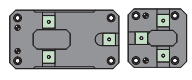



CAM DIAGRAM



Available Options

| | | SA | WA | TAK | P | |
|------|-----|---|---|--|---|--------------|
| | |  Additional slider length available 1 - 60 mm (1 mm steps) |  Additional mounting width available |  Additional key available for holder and driver (T shaped) |  Pin holes diameters available Standards Options | |
| CACF | 80 | SA1 - SA2 - ... - SA60 | WA100 / WA120 | - | Ø13 H7 | P16 (Ø16 H7) |
| CACF | 150 | - | - | TAK | Ø13 H7 | P16 (Ø16 H7) |

Ordering example: CACF-W-θ-SA-WA-TAK-P

CACF-80-30 (Standard dimensions)

CACF-80-30-SA15-WA120-P16 (Additional slider length (15 mm), additional mounting width (120 mm) and Ø16 H7 pin holes)

| Order No. | | | Main Features | | | | | General Dimensions | | | | | | | | | | |
|-----------|---------|---------------|---------------|----------------------|--------------------|--------------|------------------------|--------------------|---------|---------|---------|---------|---------|---------|---------|---------|----------|---------------|
| Model | W mm | θ ° | S mm | Working Force tnf | | Weight kg | Spring Force kgf | A mm | B mm | C mm | D mm | E mm | F mm | G mm | H mm | I mm | Ss mm | α ° |
| | | | | 1,000,000 strokes | 300,000 strokes | | | | | | | | | | | | | |
| CACF | 80 | 00 | 32.1 | 6 | 11 | 25.9 | 700 | 165 | 80 | 260 | 100 | 171 | 270 | 270 | 80 | 86 | 50 | 50 |
| CACF | 80 | 05 | 38.4 | 6 | 11 | 26.3 | 700 | 165 | 80 | 272.93 | 100 | 160.61 | 270 | 270 | 80 | 86 | 50 | 45 |
| CACF | 80 | 10 | 38.9 | 6 | 11 | 26.6 | 700 | 165 | 80 | 279.92 | 100 | 149.57 | 270 | 270 | 80 | 86 | 50 | 50 |
| CACF | 80 | 15 | 39.7 | 6 | 11 | 25.1 | 700 | 165 | 80 | 285.93 | 100 | 137.96 | 270 | 270 | 80 | 86 | 50 | 55 |
| CACF | 80 | 20 | 46.1 | 6 | 11 | 25.3 | 700 | 165 | 80 | 285.9 | 90 | 140.88 | 270 | 270 | 80 | 86 | 50 | 50 |
| CACF | 80 | 25 | 47.8 | 6 | 11 | 25.3 | 700 | 165 | 80 | 289.8 | 90 | 128.4 | 270 | 270 | 80 | 86 | 50 | 55 |
| CACF | 80 | 30 | 54.3 | 6 | 11 | 23.2 | 700 | 165 | 80 | 282.59 | 75 | 135.64 | 270 | 270 | 80 | 86 | 50 | 50 |
| CACF | 80 | 35 | 57.4 | 6 | 11 | 23.4 | 700 | 165 | 80 | 284.27 | 75 | 122.68 | 270 | 270 | 80 | 86 | 50 | 55 |
| CACF | 80 | 40 | 64.3 | 6 | 11 | 22.4 | 700 | 165 | 80 | 274.8 | 60 | 129.62 | 270 | 270 | 80 | 86 | 50 | 50 |
| CACF | 80 | 45 | 69.6 | 6 | 11 | 22.4 | 700 | 165 | 80 | 274.2 | 60 | 116.56 | 270 | 270 | 80 | 86 | 50 | 55 |
| CACF | 80 | 50 | 77.8 | 6 | 11 | 21.6 | 700 | 165 | 80 | 262.46 | 35 | 118.61 | 270 | 270 | 80 | 86 | 50 | 50 |
| CACF | 80 | 55 | 87.2 | 6 | 11 | 21.7 | 700 | 165 | 80 | 259.6 | 35 | 105.86 | 270 | 270 | 80 | 86 | 50 | 55 |
| CACF | 80 | 60 | 98.5 | 6 | 11 | 23.2 | 700 | 165 | 80 | 240.64 | 0 | 93.41 | 270 | 270 | 80 | 86 | 50 | 50 |
| CACF | 80 | 65 | 81.6 | 6 | 11 | 23.7 | 700 | 165 | 80 | 235.61 | -5 | 81.35 | 270 | 270 | 80 | 86 | 35 | 55 |
| CACF | 80 | 70 | 86.4 | 6 | 11 | 23.9 | 700 | 165 | 80 | 227.83 | -10 | 74.47 | 270 | 270 | 80 | 86 | 30 | 60 |
| CACF | 150 | 00 | 32.1 | 13 | 19 | 45.4 | 1400 | 150 | 150 | 280 | 120 | 185 | 270 | 280 | 150 | 85 | 50 | 50 |
| CACF | 150 | 05 | 32.3 | 13 | 19 | 45.9 | 1400 | 150 | 150 | 288.26 | 115 | 174.16 | 270 | 280 | 150 | 85 | 50 | 55 |
| CACF | 150 | 10 | 38.9 | 13 | 19 | 44.4 | 1400 | 150 | 150 | 285.54 | 105 | 167.64 | 270 | 280 | 150 | 85 | 50 | 50 |
| CACF | 150 | 15 | 39.7 | 13 | 19 | 44.9 | 1400 | 150 | 150 | 291.79 | 105 | 155.53 | 270 | 280 | 150 | 85 | 50 | 55 |
| CACF | 150 | 20 | 46.1 | 13 | 19 | 43.2 | 1400 | 150 | 150 | 286.97 | 90 | 147.93 | 270 | 280 | 150 | 85 | 50 | 50 |
| CACF | 150 | 25 | 47.8 | 13 | 19 | 43.7 | 1400 | 150 | 150 | 291.02 | 90 | 134.92 | 270 | 280 | 150 | 85 | 50 | 55 |
| CACF | 150 | 30 | 54.3 | 13 | 19 | 42.2 | 1400 | 150 | 150 | 283.92 | 70 | 131.6 | 270 | 280 | 150 | 85 | 50 | 50 |
| CACF | 150 | 35 | 57.4 | 13 | 19 | 42.7 | 1400 | 150 | 150 | 285.66 | 70 | 118.09 | 270 | 280 | 150 | 85 | 50 | 55 |
| CACF | 150 | 40 | 64.3 | 13 | 19 | 41 | 1400 | 150 | 150 | 276.2 | 45 | 114.47 | 270 | 280 | 150 | 85 | 50 | 50 |
| CACF | 150 | 45 | 69.6 | 13 | 19 | 41.4 | 1400 | 150 | 150 | 275.56 | 45 | 100.86 | 270 | 280 | 150 | 85 | 50 | 55 |
| CACF | 150 | 50 | 77.8 | 13 | 19 | 40.5 | 1400 | 150 | 150 | 263.74 | 25 | 102.35 | 270 | 280 | 150 | 85 | 50 | 50 |
| CACF | 150 | 55 | 87.2 | 13 | 19 | 40.9 | 1400 | 150 | 150 | 260.74 | 25 | 89.06 | 270 | 280 | 150 | 85 | 50 | 55 |
| CACF | 150 | 60 | 98.5 | 13 | 19 | 41.5 | 1400 | 150 | 150 | 246.6 | 0 | 76.08 | 270 | 280 | 150 | 85 | 50 | 50 |
| CACF | 150 | 65 | 93.2 | 13 | 19 | 42.2 | 1400 | 150 | 150 | 241.35 | 0 | 63.51 | 270 | 280 | 150 | 85 | 40 | 55 |
| CACF | 150 | 70 | 86.4 | 13 | 19 | 43.5 | 1400 | 150 | 150 | 240.01 | -5 | 51.44 | 270 | 280 | 150 | 85 | 30 | 60 |